

## The Sanctuary Fulke Street, Milford Haven, Pembrokeshire, SA73 2HJ

An opportunity to acquire a versatile and well-located commercial space in the town of Milford Haven. The site also lends itself to residential development (Subject to the necessary planning consent).

Rateable Value = £2,250 (1 April 2023 to present)

The site offers an entrance porch, a communal area/reception room, an office space and a disabled W.C.

Milford Haven has the largest port in Wales and the third-largest port in the United Kingdom. It also has a popular Marina with accompanying Restaurant, Wine Bar, and boutique shops. The town itself has a historic late 18th and 19th centuries core based on a grid pattern, located between Hubberston Pill and Castle Pill and extending inland for 500 metres. Milford Haven's 20th-century expansion took in several other settlements. Hakin and Hubberston are older and situated to the west of the main town. The town also benefits from a variety of shops and supermarkets, leisure centre, primary and secondary schools, and the Torch Theatre and Cinema.



Energy Efficiency Rating		Current	Potential
Very energy efficient - lower running costs			
(92 plus) A			
(81-91) B			
(69-80) C			
(55-68) D			
(39-54) E			
(21-38) F			
(1-20) G			
Not energy efficient - higher running costs			
<b>England &amp; Wales</b>	EU Directive 2002/91/EC		

Environmental Impact (CO <sub>2</sub> ) Rating		Current	Potential
Very environmentally friendly - lower CO <sub>2</sub> emissions			
(92 plus) A			
(81-91) B			
(69-80) C			
(55-68) D			
(39-54) E			
(21-38) F			
(1-20) G			
Not environmentally friendly - higher CO <sub>2</sub> emissions			
<b>England &amp; Wales</b>	EU Directive 2002/91/EC		

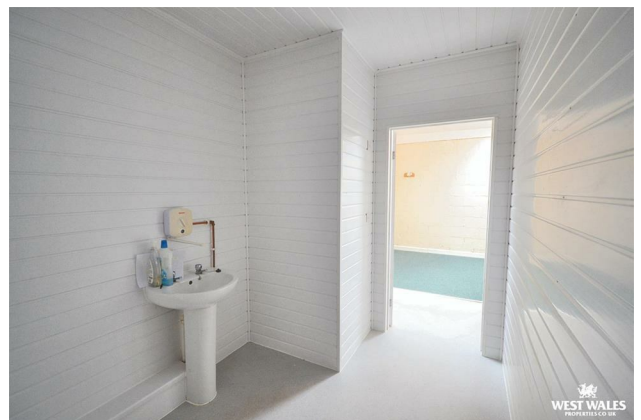
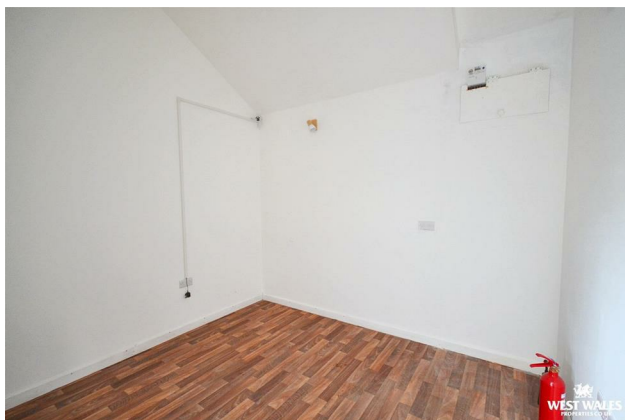


**COMPUTER-LINKED OFFICES THROUGHOUT WEST WALES and Associated Office in Mayfair, London**

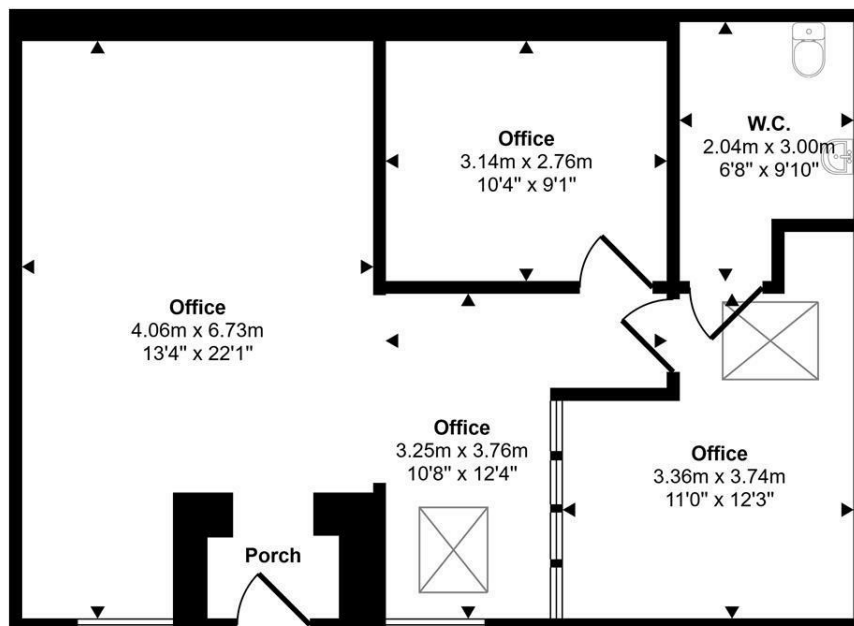
89 Charles Street, Milford Haven, Pembrokeshire, SA73 2HA

EMAIL: milford@westwalesproperties.co.uk TELEPHONE: 01646 698585

**The Agent that goes the Extra Mile**

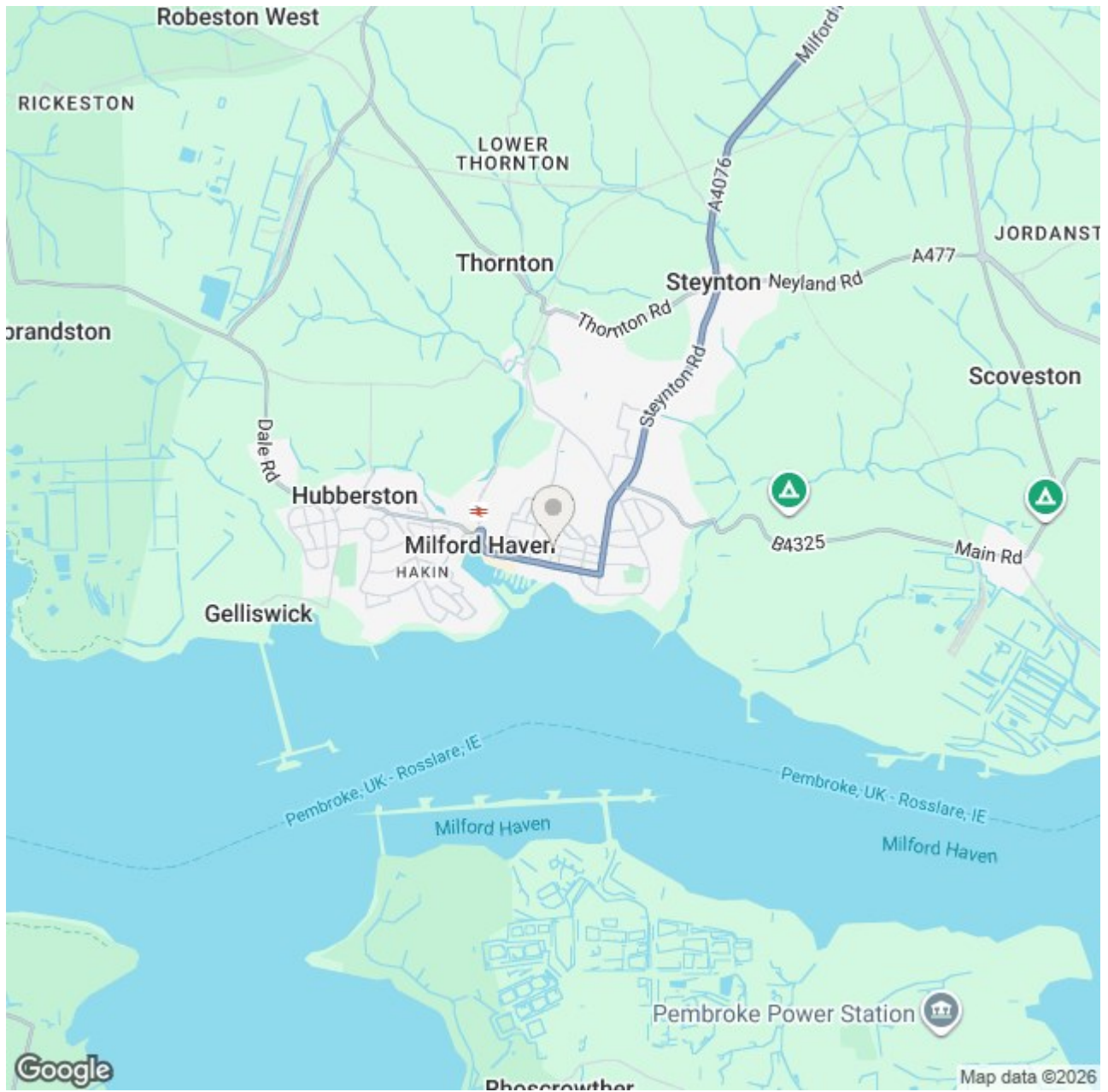


Approx Gross Internal Area  
67 sq m / 718 sq ft



Floorplan

This floorplan is only for illustrative purposes and is not to scale. Measurements of rooms, doors, windows, and any items are approximate and no responsibility is taken for any error, omission or mis-statement. Icons of items such as bathroom suites are representations only and may not look like the real items. Made with Made Snappy 360.



The particulars are set out as a general outline only for the guidance of intended purchasers or lessees, and do not constitute, any part of a contract. Nothing in these particulars shall be deemed to be a statement that the property is in good structural condition or otherwise nor that any of the services, appliances, equipment or facilities are in good working order. Purchasers should satisfy themselves of this prior to purchasing.

**COMPUTER-LINKED OFFICES THROUGHOUT WEST WALES and Associated Office in Mayfair, London**

89 Charles Street, Milford Haven, Pembrokeshire, SA73 2HA  
EMAIL: [milford@westwalesproperties.co.uk](mailto:milford@westwalesproperties.co.uk)

TELEPHONE: 01646 698585